

BANGABASI

MORNING

COLLEGE

PEOPLE'S BIODIVERSITY REGISTER

NAME: DEBRAT PAUL (SEM-2)

CU. Roll = 222144-22-0030

Reg. No = 144-III-0843-22

BIODIVERSITY (GEOG)
BANGABASI MORNING
COLLEGE

-INDEX-

Sl No	CONTENT	Pg No.
①	Acknowledgements	1
②	INTRODUCTION	2
③	Group Photo	3
④	FLORA	4-10
⑤	FAUNA	11-16

— Acknowledgement —

I would like to express my special thanks of gratitude to my respected teacher Prof Smt Aditi Das madam, who gave me the Golden Opportunity to do this wonderful project on the topic Biodiversity Register of flora and fauna.

Secondly, I would also like to thank my parents and friends and our Professor uncle who, helped me a lot in finalizing this project within the limited time frame.

Lastly I would like to thank all my supporters who have motivated me to fulfill the project before the timeline.

Date:
28.08.23

Debraj Paul.
— Signature —

-INTRODUCTION-

Banabitan Biodiversity Park, popularly known as Central Park is a public urban park. Situated in the heart of our city of Joy. It is the second largest open space in the habitat for a varied species of flora and fauna. The park is built around an expansive water body.

Banabitan is the epitome of a small pocket of nature & adject the hustle and bustle of concrete city life.



Group Photo



FLORA





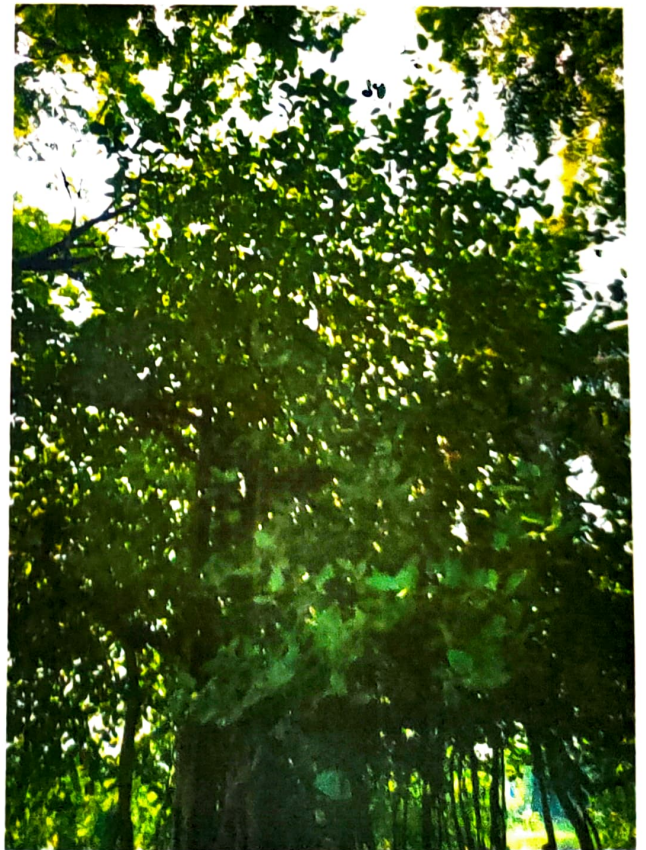
?



?



?



?

COMMON NAME	Habitat	DESCRIPTION	SPECIAL FEATURES	STATUS
Franseria	Dry Scrub Forests	Franseria is a fragrant flowering tree, also known as Plumeria	<ul style="list-style-type: none"> ① Fragrant white flowers with yellow centers ② Upright branches are thick but weak, and have a milky sap. 	Common
China Rose	Not known in a truly wild situation	<ul style="list-style-type: none"> ① They are one and a half to two inches across. ② The petals can be single, semi-double or double in form colour white pink, red or purple. 	Flowers that start out cream then are through deep shades of pink until they finish a deep red.	Common
Coconut Tree	Thrive on sandy soil and is highly tolerant of salinity	Coconut Palm is a tree with a slim and smooth trunk, a crown of leaves, and rounded, green or yellow fruit.	The coconut tree have a fibrous outer coating that allows them to float on water.	Common
Banyan Tree.	High humidity, moderate shade	The banyan reaches a height up to 30 meters (100 Feet) and spreads laterally indefinitely.	The banyan tree have high water & requirements and subtropical and tropical climates.	Common



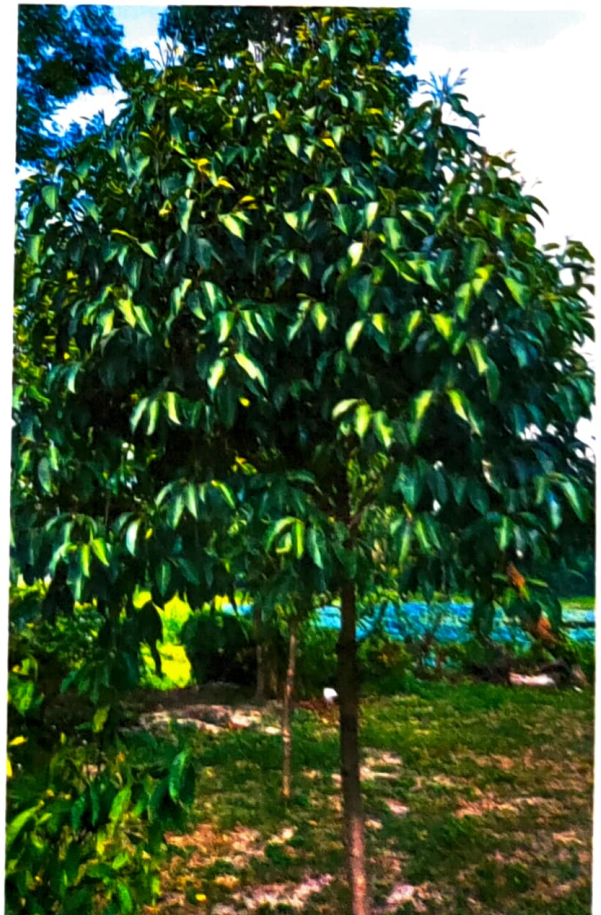
?



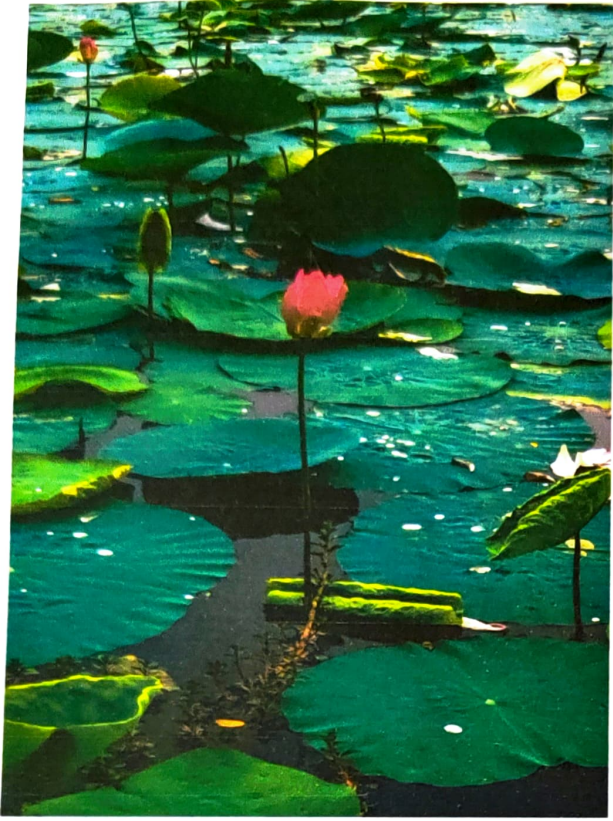
?



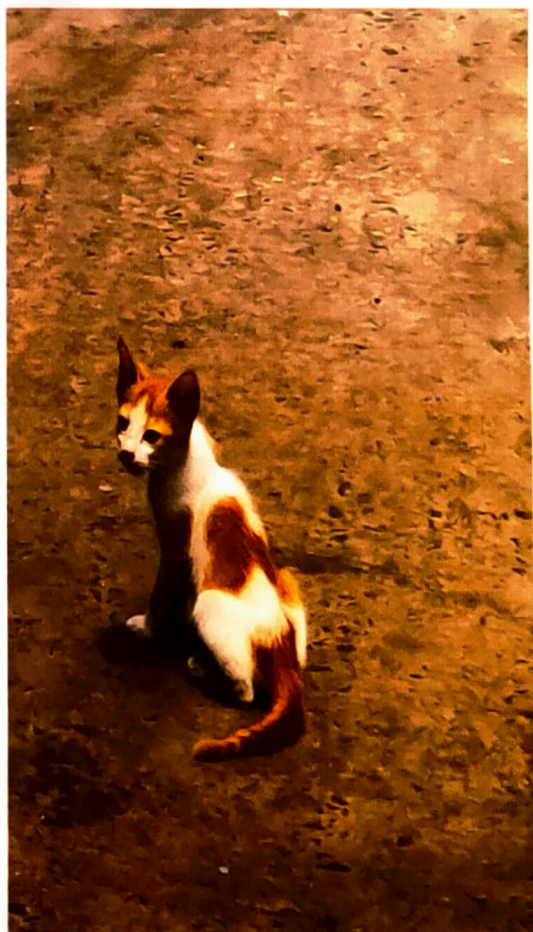
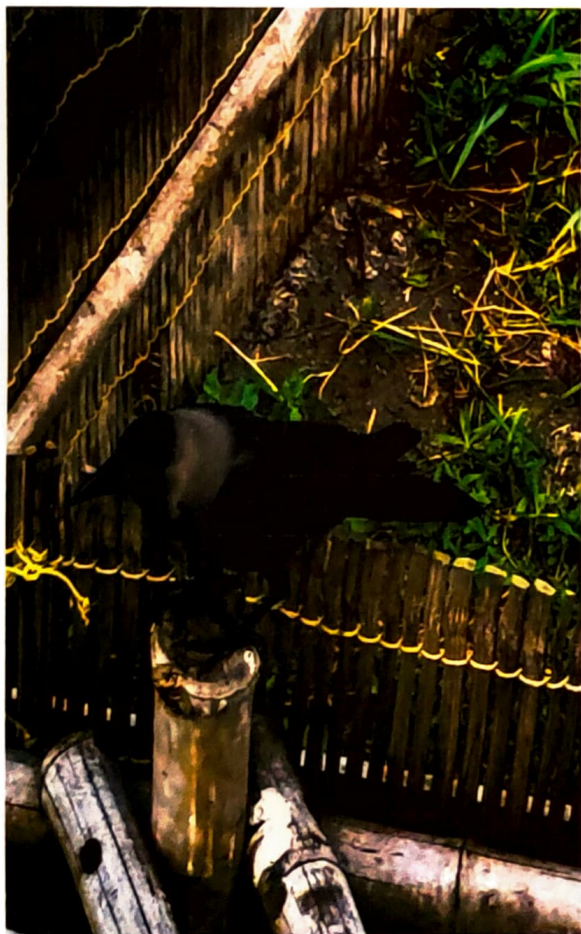
?



COMMON NAME	HABITAT	DESCRIPTION	SPECIAL FEATURES	STATUS
Pine wheel flower	mountain forest and Shrub forest	Evergreen round shrub with large, glossy dark green leaves and waxy white flowers.	It's flower petals are twisted like pine wheels and are fragrant, especially at night	Common
Rubber Fig	Low altitude moist forest	It's a broadleaf ever green shrub or tree that may grow to 50-100' tall in it's native habitat.	It has soft wood high, branching limbs; and a large area of bark.	Common
Banana Tree	Grows in the humid	Banana Plant is a Perennial herb that grows from a bulb of Rhizome.	Large, fleshy upright stalks topped with soft, smooth, arching leaves.	Common
Mango Tree.	Grows best in Low Land Tropical	Mango Tree are deep-rooted Symmetrical Evergreens that attain height of 90 Feet and widths of 80 FEET	Mango trees have simple alternate lanceolate leaves that are 12 to 16 inches in length. mature leaves are leathery, glossy and	Common



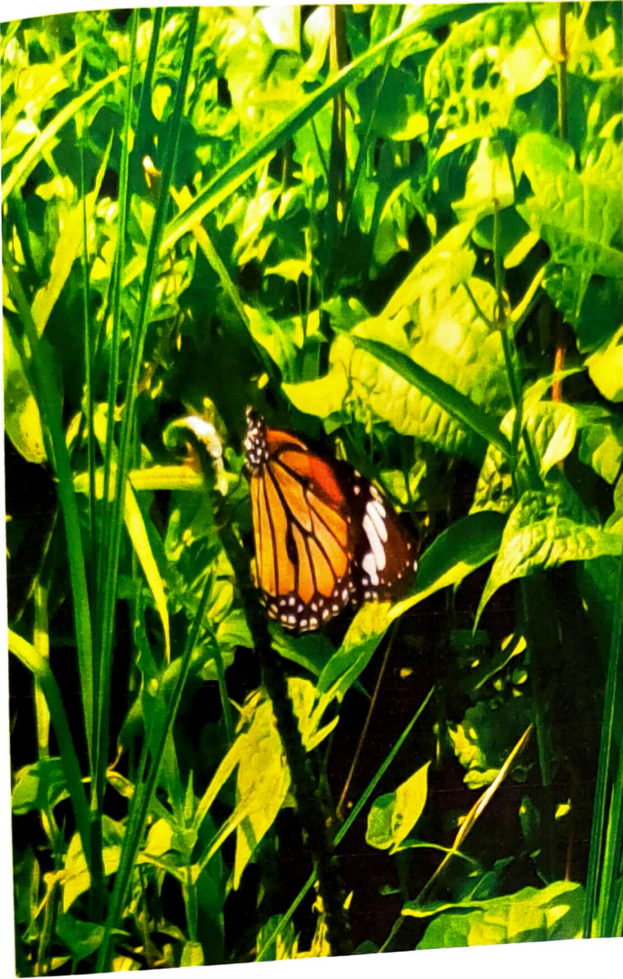
COMMON NAME	HABITAT	DESCRIPTION	SPECIAL FEATURES	STATUS
Lotus Plants	Lotus found in warm in lake	<p>The lotus flower is an aquatic Perennial.</p> <p>Sometimes mistaken for the water lily, the lotus has a distinctively different structure.</p>	<p>It. also come only in pink hues or white. whereas the lily comes in many different colors. The roots are implanted in the soil.</p>	Common
Mimosa Plant	Crozlands arehars ?	<p>A Poickly, long lives (Perennial) herbaceous plant or small shrub with a creeping prostrate or decumbent).</p>	<p>Rapid leaf movements in response to touch.</p>	Common



COMMON NAME	HABITAT	DESCRIPTION	SPECIAL FEATURES	STATUS
Common Myna	Likes Open Country	The Common Myna is readily identifiable by the brown body, black hooded head and the bare yellow patch behind the eye. The bill and legs are bright yellow.	Mynas are medium-sized passerines with strong feet. Their flight is strong and direct, and they are gregarious.	Common
Dog	They like forest and brush lands	A dog is a domestic mammal of the family Canidae and the order Carnivora.	Dogs are good family pet. Loyal companion. Affectionate and gentle and loyal and fiercely protective of owner.	Common
Crow	They live almost any wood land forest and areas	Large intelligent, all-black birds with hoarse, cawing voices.	<ul style="list-style-type: none"> (i) Crows are super smart. (ii) Crows mate for life. (iii) Crows have regional dialects. 	Common
Cat		They have it has a strong flexible body, quick reflexes, sharp teeth, and retractable claws.	<ul style="list-style-type: none"> (i) Cat are great fighter. (ii) Psychic whiskers. (iii) Far-sighted foveas. 	Common



COMMON NAME	HABITAT	DESCRIPTION	SPECIAL FEATURES	STATUS
Bee	They live in Gardens wood lands	A bee's body is divided into three parts a head with six legs, and an abdomen.	<ul style="list-style-type: none"> (i) Bees have 5 eyes (ii) male Bees are insects, so they have 6 legs. (iii) Bees fly about 20 mph. (iv) Lancing its stinger will cause a bee to die 	Common
Ant	most Ants live in nests which are located in ground	They range in size from about 2 to 25 mm (about 0.08 to 1 inch) Their colour is usually yellow, brown red or black.	<ul style="list-style-type: none"> (i) Ants don't have lungs (ii) Some ant species are asexual. (iii) Ants are farmers (iv) Ants don't have ears (v) Ants can swim 	Common
Squirrel	nearly mature or mature forests.	Squirrels are generally small rodents with slender bodies, bushy tails and large eyes.	Squirrels have four front teeth which never stop growing throughout their lives.	Common
Parrots	tropical areas of the southern hemisphere.	a strong, curved bill, an upright stance, strong legs, and clawed zygodactyl feet	Combined with beaks that can crack even the world's hardest nuts, their unique feet make them formidable eaters, not mention.	Common



S/N	COMMON NAME	HABITAT	DESCRIPTION	SPECIAL FEATURES	Status
	Tiger Milkweed Butterflies	Monarch butterflies live in North Central, and East America as well as Australia.	The Plain Tiger is a medium-sized vibrant butterfly with orange on top the upperside with wings edged with black and white.	The segmented body (head, thorax and abdomen) is black. The underside of the wings are a lighter shade of orange.	Common
	Herons	Herons are long legged birds typical found in ponds, marshes and swamps.	A heron is typically a tall bird with broad wings and a long neck. Unlike most other birds	They have a white body with a broad black stripe that extends from their eyes to the black crest.	Common